

HOW TO GET THE MOST OUT OF YOUR IR TRACKER



Lighthouse Guidelines

Do not move the Lighthouse when it is powered on as this can **damage** the unit.

Small components are rotating inside the Lighthouse. If moved while rotating, these components might not perform as intended.


Fixate the Lighthouse separate from moving parts.

It is recommended to fixate the Lighthouse to a sturdy base. Vibrations from the surroundings will **affect the tracking.**

OPTIMUM TRACKING WITH IR TRACKER

1 Make sure the tracker is powered on.

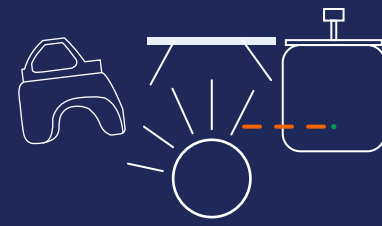
To turn the tracker on, press and hold the power button for the green light to appear.



2 Be aware of light and reflective surfaces.

The IR Tracker uses light for tracking. Therefore, other light sources and reflective surfaces can affect the tracking.

For optimum tracking, avoid reflective surfaces near the Lighthouse or the Tracker



Avoid blocking the view between the Lighthouse and the Tracker.

3 Avoid blocking the view between the Lighthouse and the Tracker.

As the IR Tracker uses light between the Lighthouse and the Tracker to see where the Tracker is, it is important to not to block the view between the Lighthouse and the Tracker.

Having objects in between or a person walking by, can block the view and thus the Tracker will not be able to determine its position



4 Avoid blocking the view with the hand.

Sometimes you will need to remove the Tracker from the Joystick when aligning the Tracker with the Robot. Be aware that you do not block the Tracker completely from the Lighthouse.




Consider the field of view of the Lighthouse

5 Consider the field of view of the Lighthouse

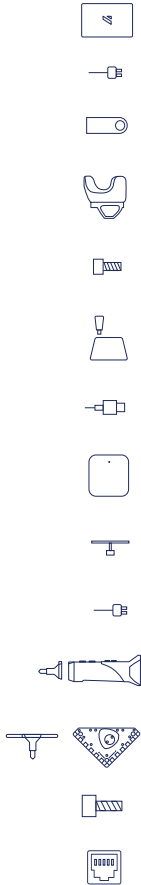
Horizontal field of view = 150°

Vertical field of view = 110°



IN THE BOX

- 1x Nordbo Controller
- 1x Power Supply for Nordbo Controller
- 1x USB flash drive
- 1x Tracker
- 1x 1/4 Camera Screw (Preinstalled in Tracker)
- 1x Dongle and Dongle Cradle
- 1x USB Type-C cable
- 1x Lighthouse
- 1x Stand for Lighthouse
- 1x Power supply for Lighthouse
- 1x Mimic IR Standard Joystick 2, incl. Joystick Pointer
- 1x Calibration Kit
- 4x M6-10mm Stainless Steel Bolts
- 1x Lan-cable 2m

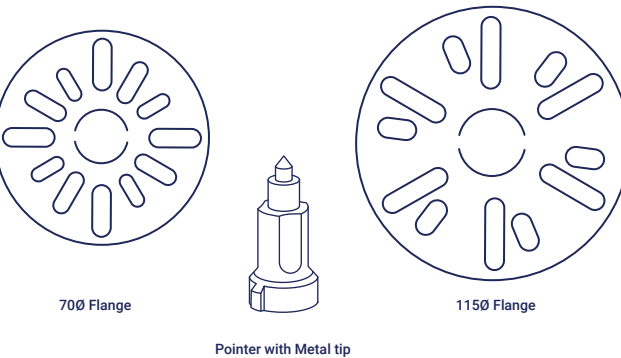


MIMIC ROBOT POINTER

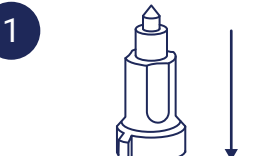
Pointer used for calibration

The robot pointer is composed by two flanges, one pointer and one metal tip. The pointer lays on top of the flange and one 40mm M4 screw is used to attach the metal tip, pointer and flange together.

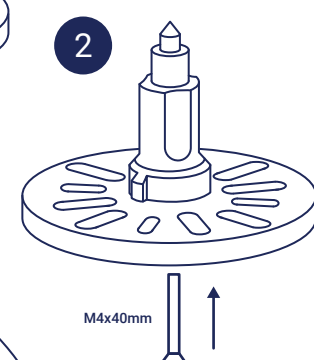
To attach the pointer to the robot: **The size of screws to be used depend on the robot and on the flange being used.** The **70Ø flange** has space for M4, M5 and M6 screws in a hole pattern of 4. The **115Ø flange** has space for M8 and M10 screws in a hole pattern of 6.



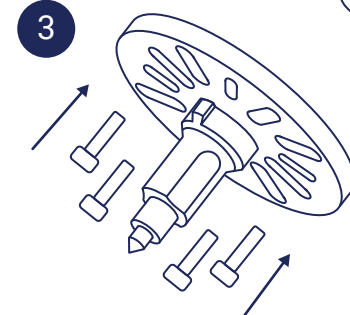
1



2



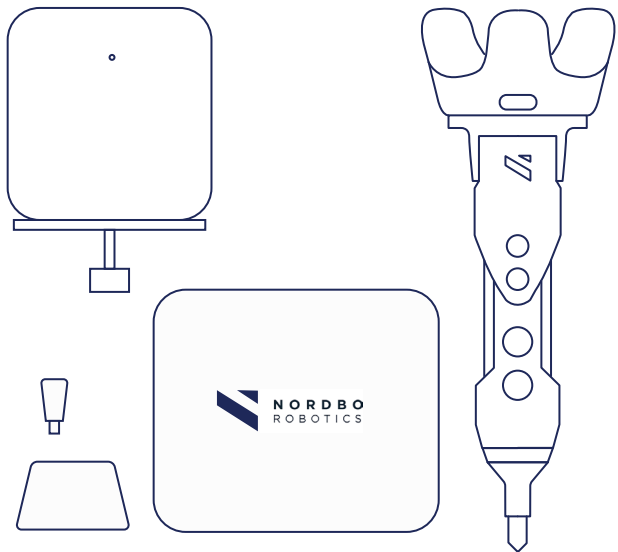
3



Caution: Metallic pointers contained in this kit are sharp and should be handled with care.

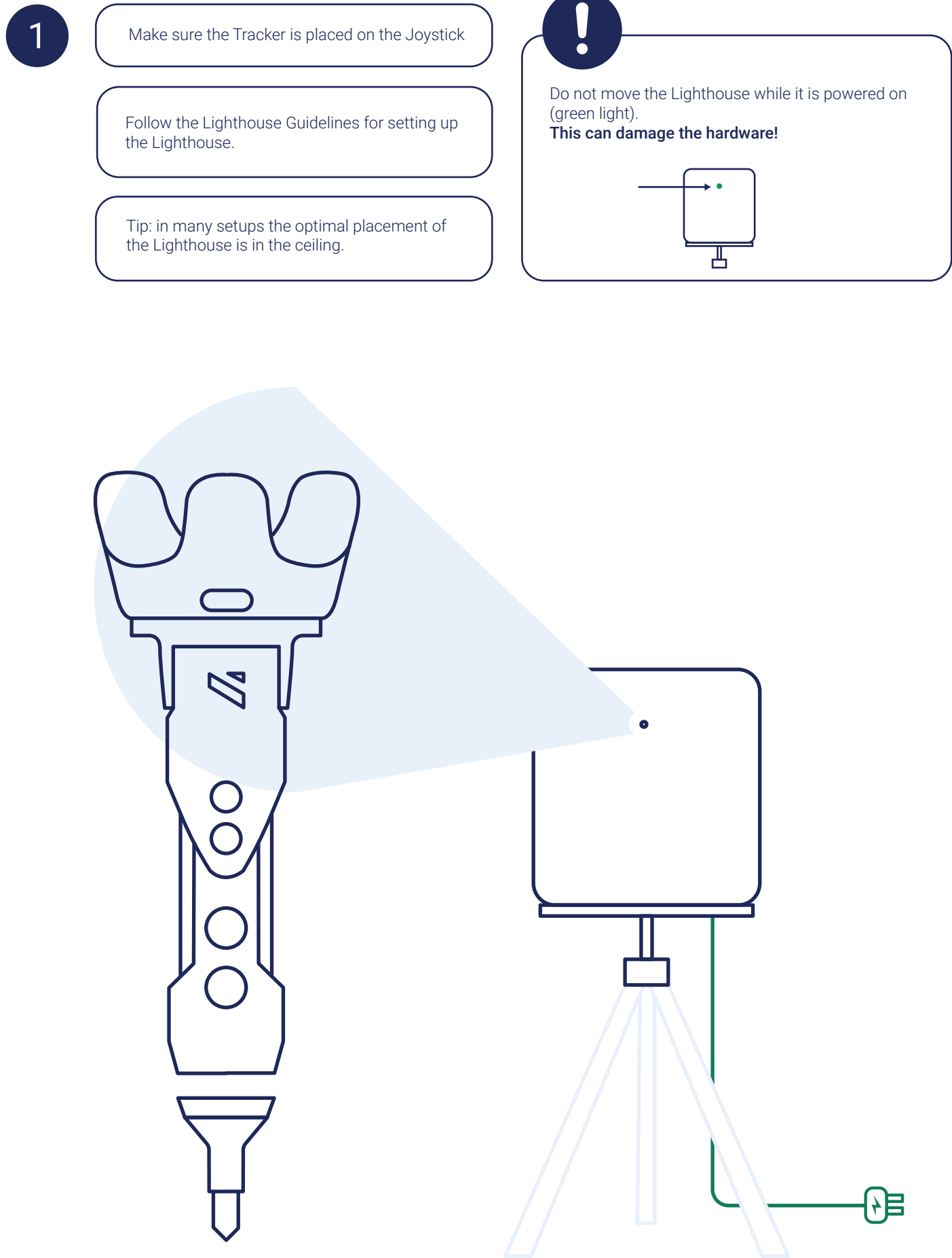
IR TRACKER FOR MIMIC

No-code programming



Quick Start Guide

HOW TO CONNECT THE TRACKER



HOW TO CONNECT THE CONTROLLER

